

How To Draw A Proper Diagram

1. Plain, white, unlined paper that is 8 1/2" X 11".
2. All diagrams in pencil (NOT ink). Keep the pencil as sharp as you can.
3. Place the drawings on the **left** side of the paper. Avoid sketching, and make your drawings large enough (**1/2 page each drawing**) so all details are easily visible. Only two drawings per page! A common tendency is making drawings too small.
4. The details of the drawing should be neatly labelled by means of horizontal lines drawn using a ruler to the **right** of the drawing. Each line should touch what it is meant to indicate, not stop 2 mm away. Print labels in small lowercase letters. Spelling should be correct.
5. All titles should be printed with capital letters. Each drawing should be accompanied by a descriptive caption and its magnification. Spelling should be correct.
6. Your name and class should be labelled on the sheet on the bottom right hand of the paper.

INCLUDE:

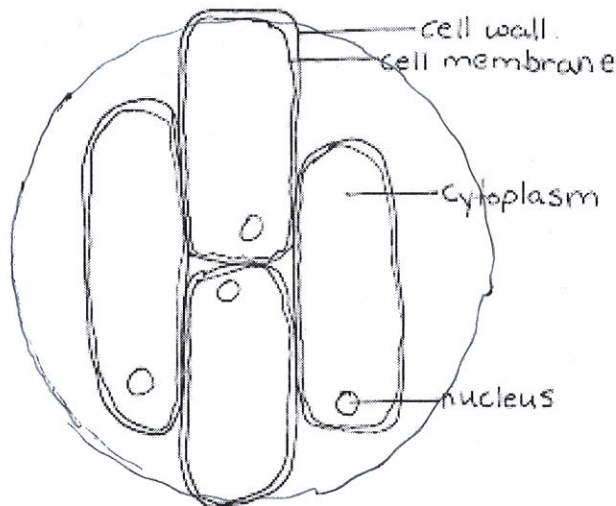
MAGNIFICATION

D.O.F.

WIDTH OF
WHATEVER

YOU ARE LOOKING AT.

Onion Epithelial Cells

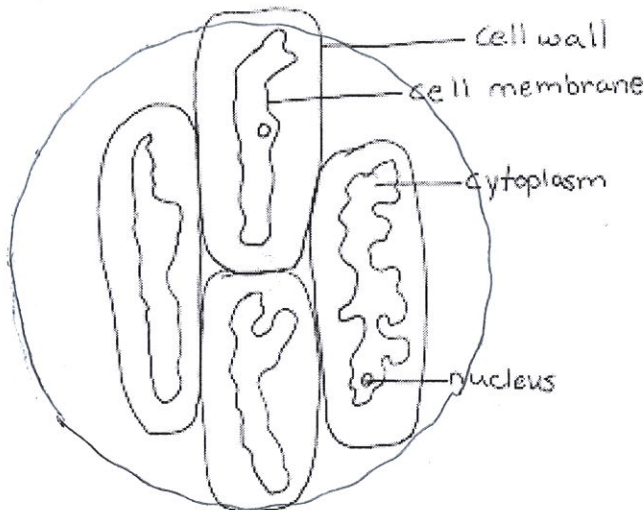


ONION CELL IN
Isotonic Solution

MAGNIFICATION: 400x

DIAMETER OF FIELD: 0.5mm

CELL WIDTH: 100µm 500µm



ONION CELL IN
Hypertonic Solution

MAGNIFICATION: 400x

DIAMETER OF FIELD: 0.5mm

CELL WIDTH: 100µm 500µm